

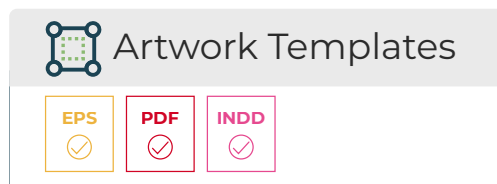
Artwork Instructions

Setting up your artwork for print is easy. There are a few simple guidelines to follow that will allow us to print your artwork correctly.

If you need any further assistance with your artwork, please consider using our File Assist service when placing your order.

1. Download Our Template

We recommend you download the template for this product. It includes the exact dimensions, guidelines and available print colours to help you. These can be found on the product page.



2. Choose your colour

Your chosen product is printed using a specific colour. This must be set up as a spot colour, with the HEX code as the colour name. We have set these colours up and listed them below. Depending on your template format, these spot colours may already be set up for you in the Swatches panel, usually indicated with a small triangle with a spot in it at the bottom right of the colour swatch.

This is a single-colour print, meaning you can only choose one colour for your design.

Available Colours



or

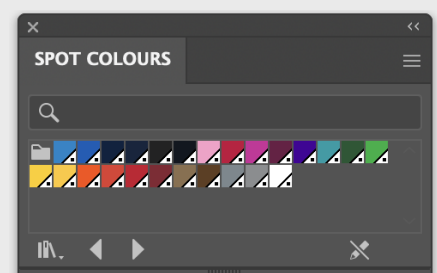
Use the .ase file

You can use the .ase file that contains the available print colours pre-made for this product. It is included in the "Artwork Instructions" folder accompanying this template, or can be downloaded here:

help.tradepoint.co.uk/colour-options-for-promotional-products

Install Instructions

help.tradepoint.co.uk/how-to-open-.ase-files-adobe-swatch-exchange.



3. Creating Your Artwork

Add your logo or text to the template and position it on the artboard. Your graphic **must** be a vector. You can vectorise bitmap artwork online, at www.vectorizer.io but results can vary and it is always best to use artwork originally created as a vector wherever possible.

Don't forget to embed your fonts, alternatively you can outline them.



Use Vector Graphics

Please use only vector graphics in your artwork. This means gradients and bitmaps cannot be used.

Vector



Bitmap



4. Export Print Ready PDF

Export your print file as a High-Quality Print PDF or PDF/X-1a:2001. Make sure all fonts are embedded or outlined. Ensure you have deleted or turned off the visibility of the template layer.

Once you have your artwork file, simply upload it to your order and we'll take care of the print.

